

MELIÀ | WHITE HOUSE LONDON

The Meliá White House hotel offers a prime Central London location, next to Regent's Park and within easy walking distance of Oxford Street, the West End theatres and Piccadilly Circus.

AERI – 2016 PREFERRED CORPORATE RATES:

Monday to Thursday:

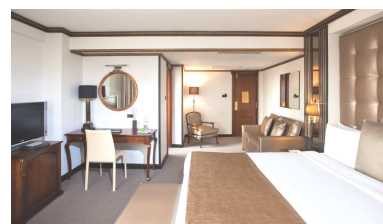
- **Classic room :** £ 192 – including Full English Breakfast
- **Premium room:** £ 230 – including Full English Breakfast
- **Executive room:** £ 290 – including THE LEVEL amenities*
- **Junior Suite:** £ 315 – including THE LEVEL amenities*

Friday to Sunday:

- **Classic room :** £ 150 - including Full English Breakfast
- **Premium room:** £ 192 - including Full English Breakfast
- **Executive room:** £ 252 - including THE LEVEL amenities*
- **Junior Suite:** £ 306 - including THE LEVEL amenities*

* THE LEVEL amenities include:

- Private Level Reception
- Complimentary full breakfast served in the Level breakfast room
- Access to Executive lounge with complimentary WIFI Internet, all day canapés & refreshments, newspapers
- Evening open bar & tapas buffet in the Level lounge
- One hour complimentary in a private meeting room (up to delegates)
- Luxury in-room amenities



- **Rates are inclusive of VAT (20%)** and subject to availability
- £10 Supplement applicable for Double Occupancy (incl. VAT)
- **Special Business Groups** and **Apartment weekly rates (Min 90 days stay)** on request
- **Complimentary access to the hotel Gym**
- **10% discount on F&B** (minibar excluded)
- **24 hrs. complimentary WIFI access in the room and public areas**
- Guest experience services with **Melia Connect team** (dial 700 direct from your room)

- **Melia Rewards** loyalty program <http://www.melia.com/mas-rewards/mas.htm>
- **Express Check out service** - Please collect the form from Concierge desk

RESERVATIONS & CONTACTS:

- Direct to hotel: reservations.mwh@melia.com
Tel: +44 (0)20 7391 3000
Please quote: **AERI**
- Cancellation policy: no charge by 4:00pm one day before arrival date (24 hrs.)
- Hotel contact: Cristina Zaragoza – cristina.zaragoza@melia.com
For special requests, feedback or any assistance needed

HOTEL CONNECTIONS:

Nearest underground stations:

- Great Portland Street (opposite)
- Warren Street and Regent's Park (5 minutes walk away)
- From St Pancras International (Eurostar): 2 stops direct by underground (Circle Line)
- From Paddington station (Heathrow Express): 4 stops direct by underground (Circle Line)

